



Orion Township & RCOC

Safe Routes to School Project

April 2021



WELCOME

Presentation by: Jessica Katers, PE, OHM

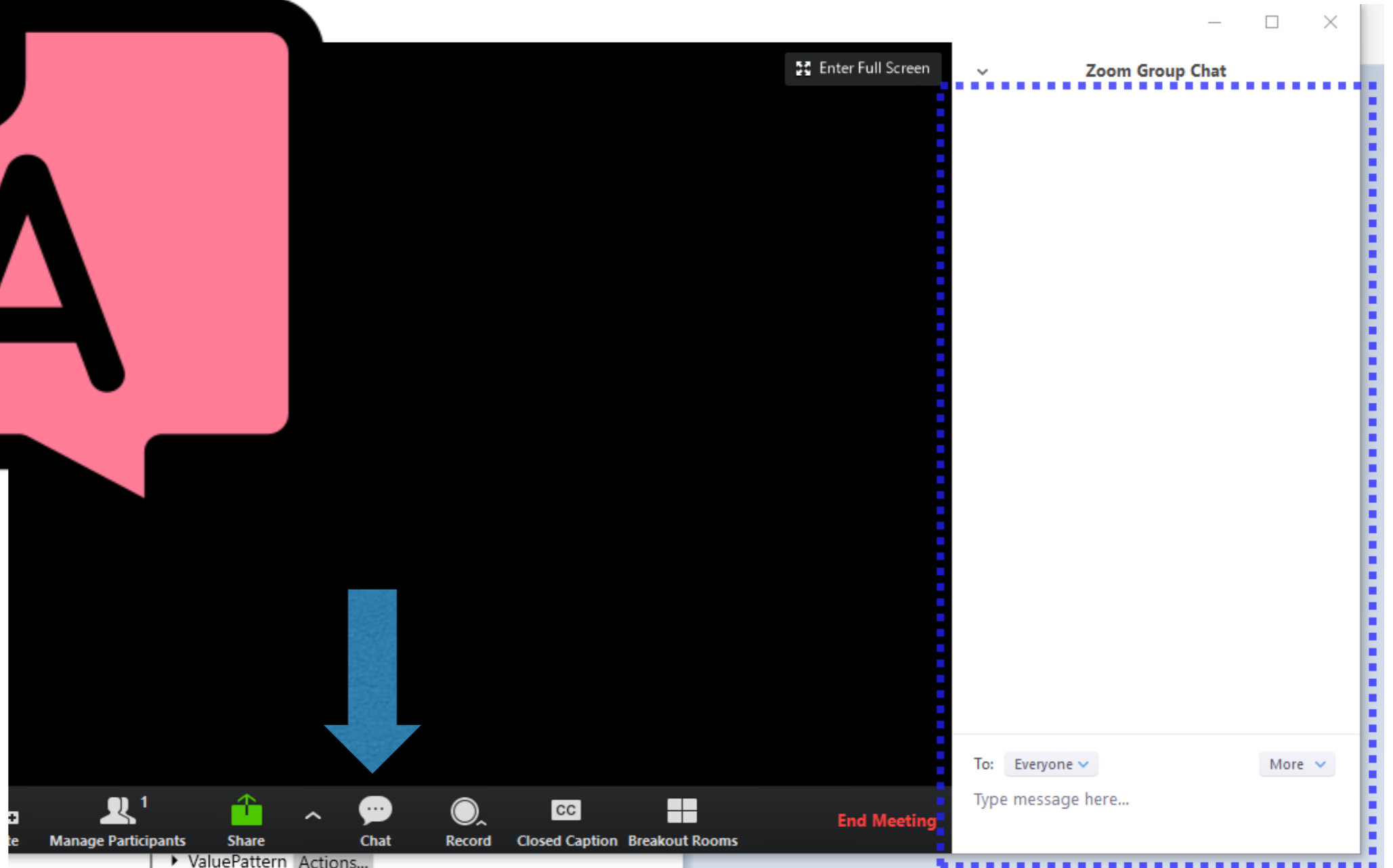
Q&A Support: Kimberly Klieber, OHM

Township Representation: Aaron Whatley, Parks and Recreation

Contractor Representative: Brian Gustin; Merlo Construction

Field Technicians: Mitch Master, OHM & Andy Wissman, OHM

Please use the “Chat” Window to type your questions, we will have them **answered live AT THE END** of the presentation.



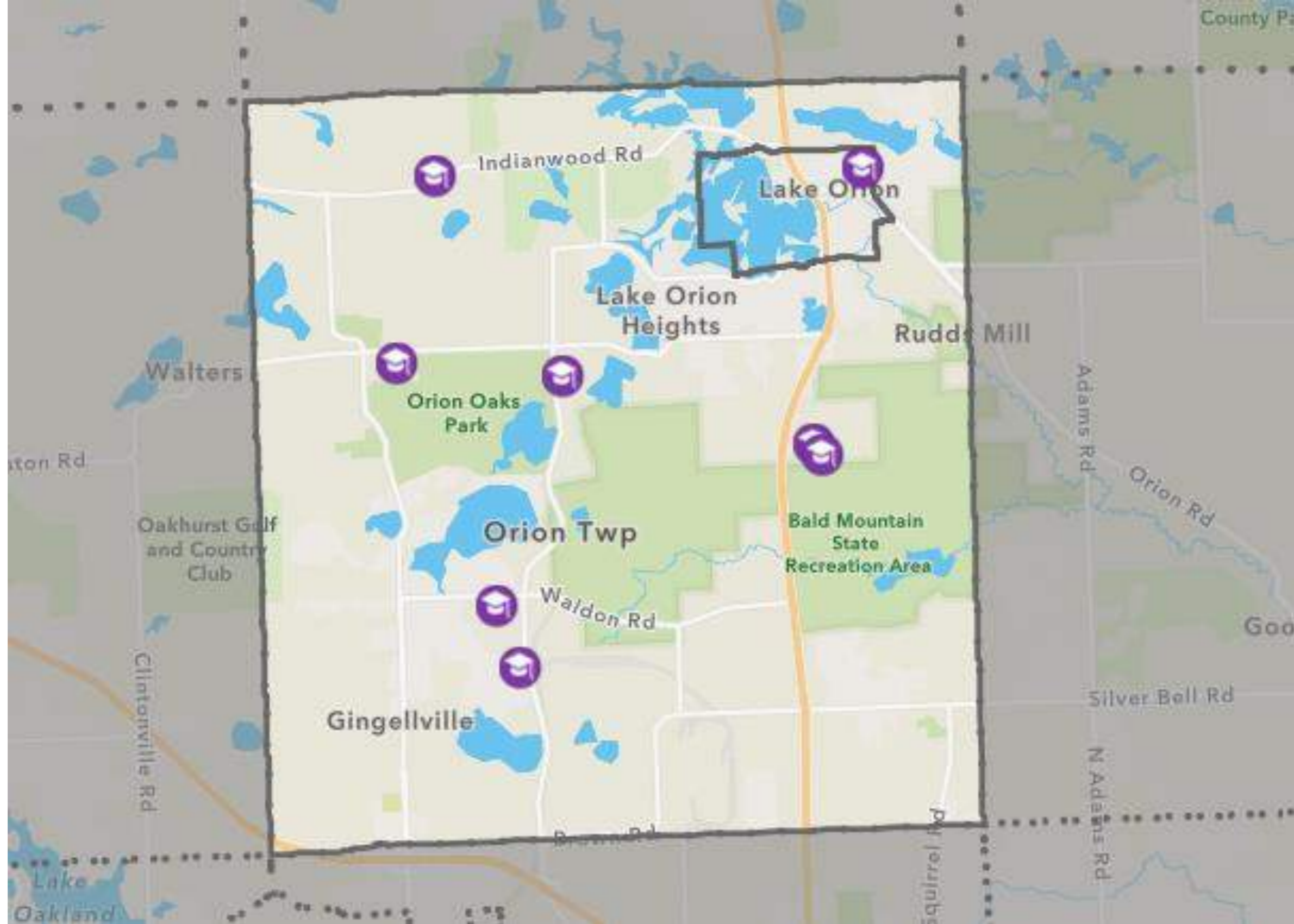
Grant Program for eight (8) elementary and middle schools' campuses within Orion Township.



Safe Routes to School

AGENDA:

- Interactive Online Map
- Review Proposed work
- FAQ Review
- Summary of Work Schedule
- Open for Questions



Interactive Online Map Available



Blanche Sims
Elementary School



Carpenter Elementary
School



Orion Oaks Elementary
School



Paint Creek Elementary
School



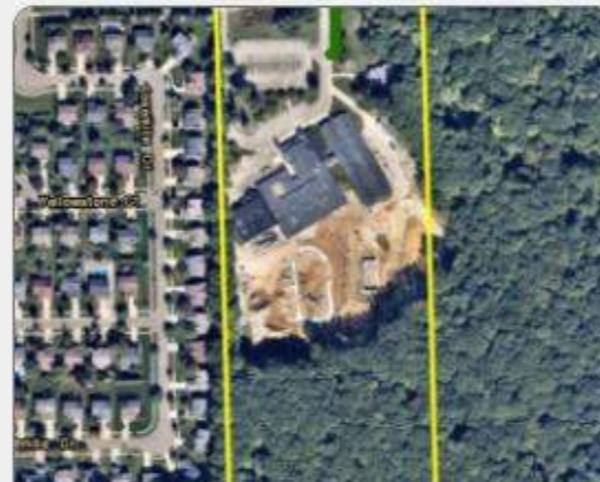
Scripps Middle School



Stadium Drive
Elementary School



Waldon Middle School

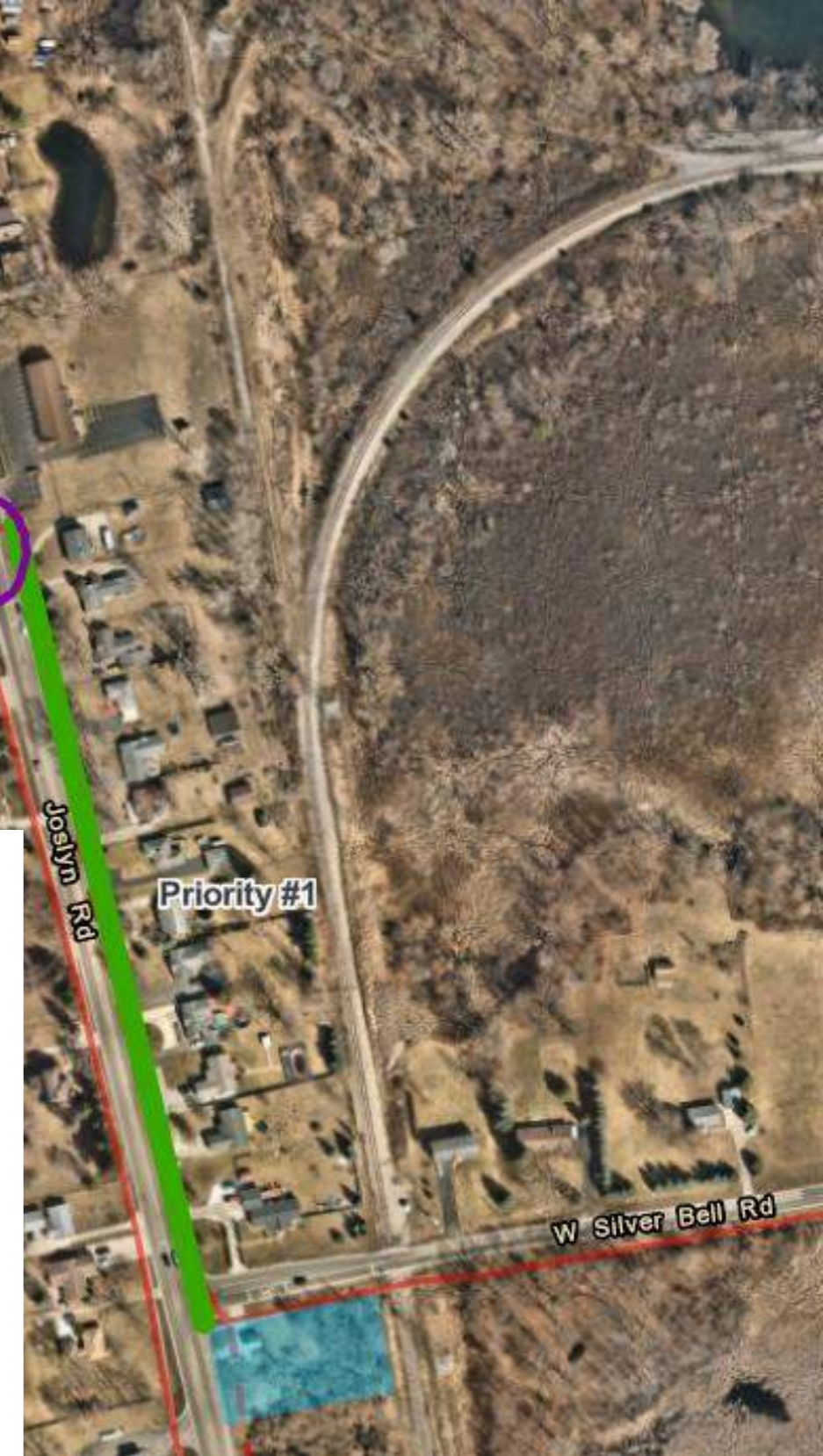


Webber Elementary
School

Clickable link per School
with downloadable plan
sheet of proposed work.



BLANCHE SIMS ELEMENTARY



Install a 6 ft wide sidewalk along Joslyn Road (on East side) from Silverbell Road, north to Flintridge Street.

Install a 10 ft wide pathway along Joslyn Road filling the pathway gap between Mapleview Drive and the Polly Ann Trail.

Install a 5 ft wide sidewalk along Flintridge Street from Gainesborough Drive to Joslyn Road.

CARPENTER ELEMENTARY



Install a 10 ft wide pathway for from the northeast corner of the Orion Center property, north to the south side of Orion Oaks School Buildings existing internal pathway.

ORION OAKS ELEMENTARY



Install a 10 ft wide pathway along the north side of the roadway from the east side of Paint Creek School property, toward the east and ending at Creekwood Drive.

Install a 10 ft wide pathway on school property that connects roadside infrastructure to internal campus infrastructure.

PAIN T CREEK ELEMENTARY



Install 10 ft wide elevated pedestrian facility from the southeast quadrant of Lapeer Road and Greenshield Road.

Install 5 ft wide sidewalks through Round Tree Subdivision.

Construct 10 ft wide pathway from the intersection of Scripps Road/Bald Mountain Trail, and Starlight Trail, to connect two existing pathways on the edge of school property with ADA Ramp upgrade as well.



SCRIPPS MIDDLE SCHOOL

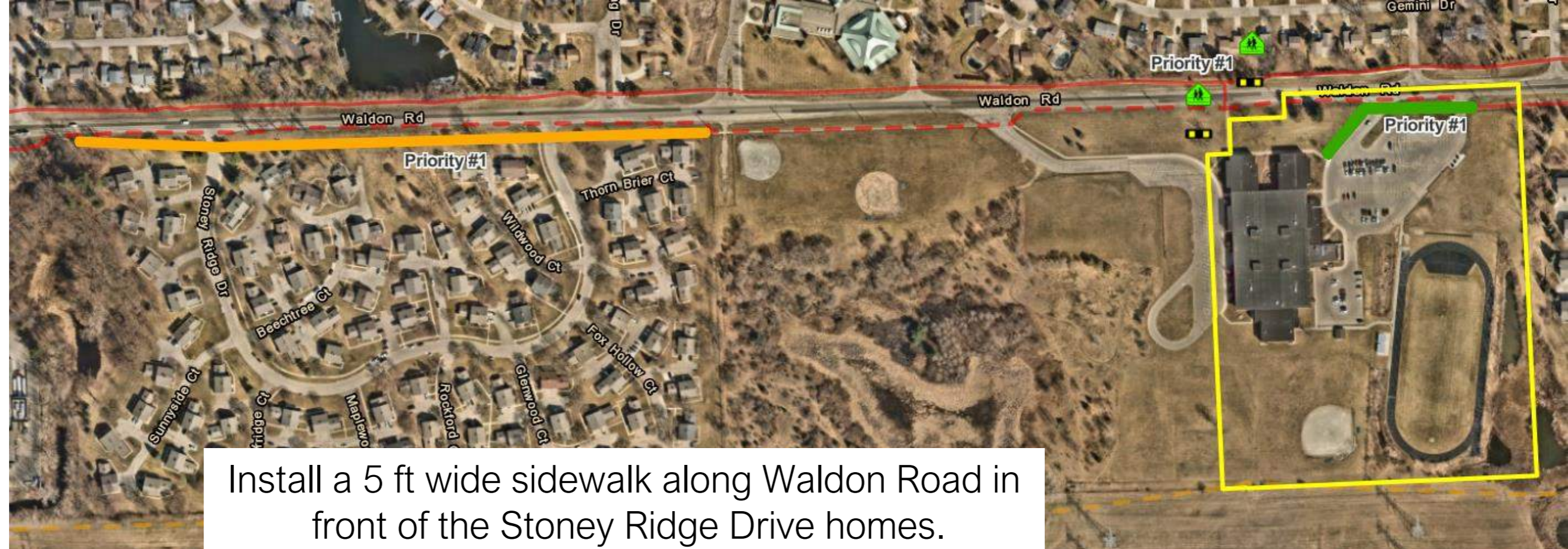


Install a 10 ft wide pathway on the south side of Scripps Road, connecting an existing pathway and running north to connect to existing Stadium Elementary school pathway.

Upgrade to Rapid Rectangular Flashing Beacon (RRFB) style pedestrian crossing at Scripps and Huntington Drive.



STADIUM ELEMENTARY

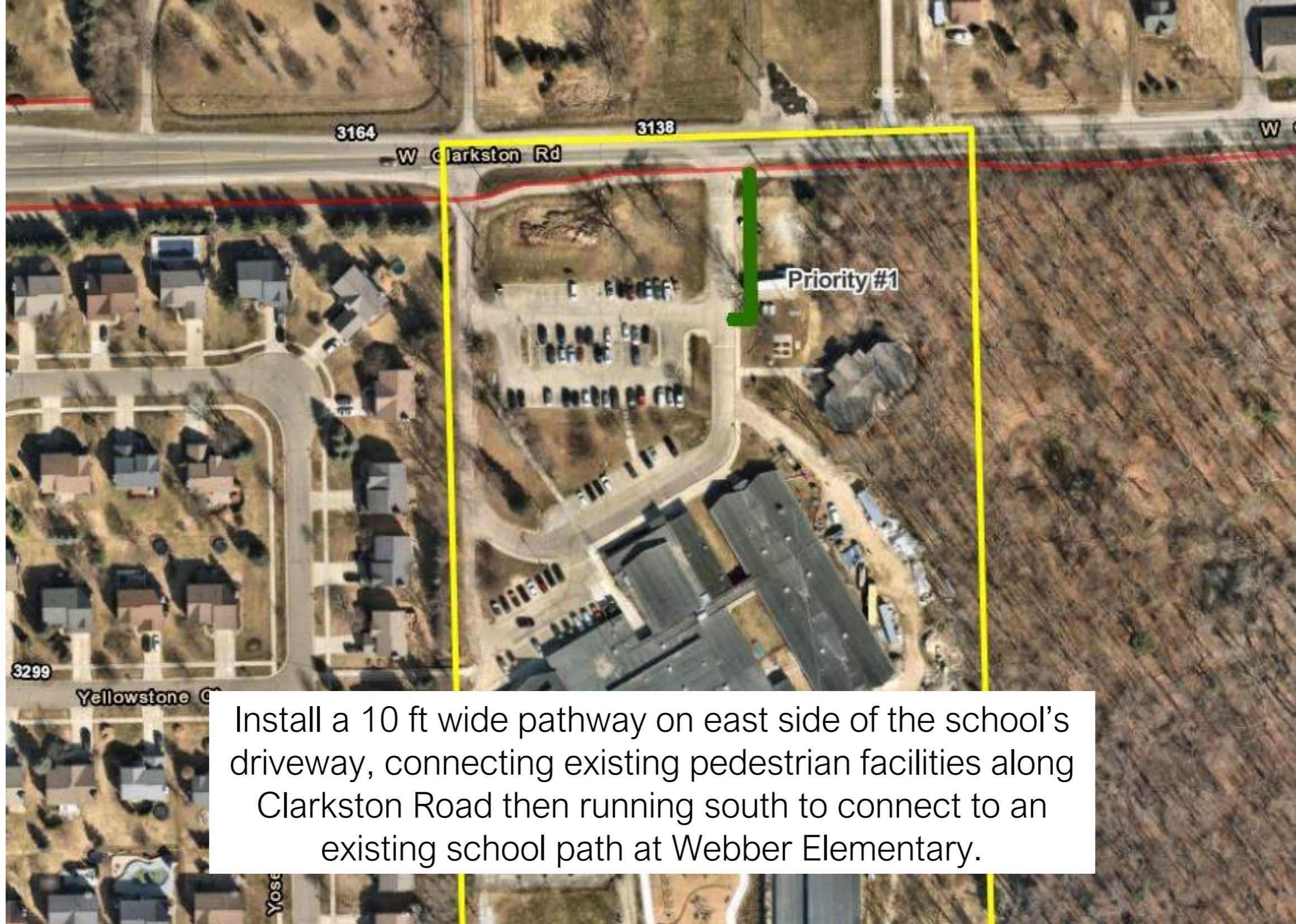


Install a 5 ft wide sidewalk along Waldon Road in front of the Stoney Ridge Drive homes.

Install a 10 ft wide pathway along Waldon Road, connecting to the existing pedestrian facilities that are roadside to the existing facilities at the school entrances.

Upgrade existing pedestrian crossing to RRFB style crossing, west of Aldrin Drive.

WALDON MIDDLE SCHOOL



WEBBER ELEMENTARY





Will I receive Replacement Trees or Shrubs if your removed any on my property for this project?

Yes, the field inspection team and OHM office team will contact you directly to choose a replacement planting when the time is appropriate.

If the Contractor hits my sprinkler system, what happens?

The Contractor or the Township will be repairing all sprinkler systems that are damaged during construction at no cost to the homeowner. If able – please disable/turn off the sprinkler zones located within public right-of-way.



What will my lawn be restored with?

The contract includes restoration with a minimum of 3 inches of topsoil with seeding. The Contractor is responsible to ensure establishment and growth.

Will the Contractor wear a mask while working in my front yard?

The Contractor is required to have a COVID-19 safety plan and follow all CDC guidelines. Should there be any interaction with the Contractor, they will follow all current CDC guidelines.



Who do I contact if I have a concern about this project?

The contacts will be:

Aaron Whatley at the Township, awhatley@oriontownship.org

Kimberly Klieber at OHM Advisors, kim.klieber@ohm-advisors.com

Field Supervisor, OHM – Mitch Masters (734-855-9876)

Field Inspection, OHM – Andy Wissman (248-854-2379)

Who is paying for this project?

This is a federal grant totaling \$1.6 Million with a required local match that is paid for from the Orion Safety Path Millage.

SCHEDULE



Waldon Middle School -	Week of April 26 th , 2021
Carpenter Elementary School –	Week of May 24 th , 2021
Stadium Elementary School & Scripps Middle School -	Week of June 10 th , 2021
Orion Oaks Elementary School –	Week of July 26 th , 2021
Webber Elementary School -	Week of July 26 th , 2021
Paint Creek Elementary School -	Week of August 11 th , 2021
Blanche Sims Elementary School –	Week of August 11 th , 2021
Greenshield and Lapeer intersection -	Week of September 11 th , 2021

NOTE*: *This anticipated construction schedule will be updated on a bi-monthly basis to show the most up to date anticipated start dates for each work area. Construction schedules rely heavily on the weather for operations to be completed correctly and fair weather is significantly important for a construction schedule to stay on track.*

TIME TO ANSWER QUESTIONS USE THE CHAT BOX



THANK

YOU

